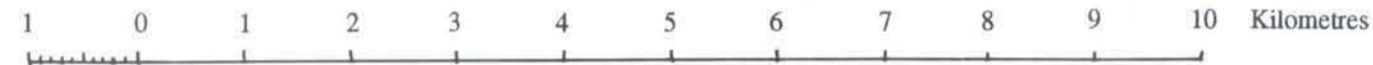
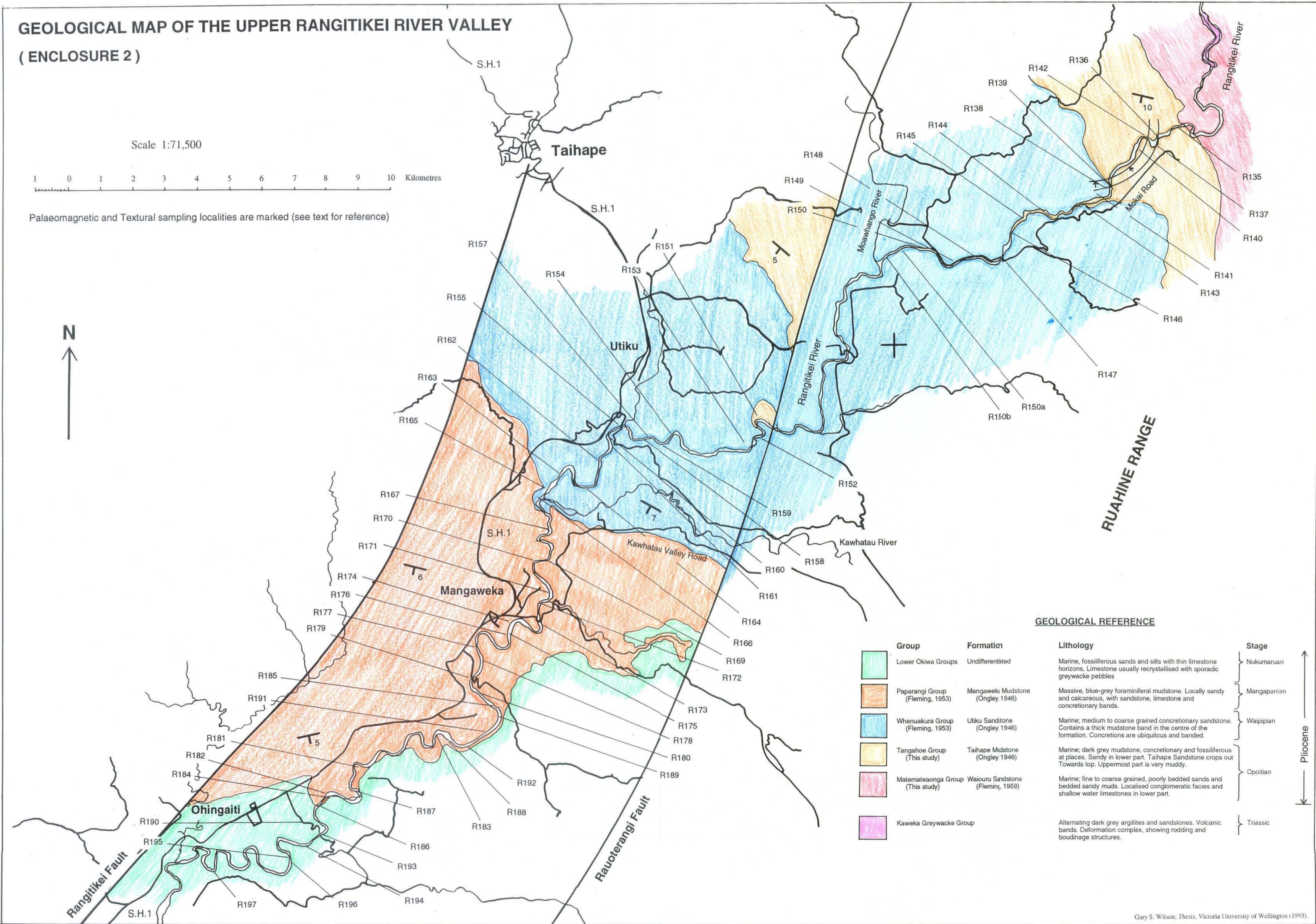


GEOLOGICAL MAP OF THE UPPER RANGITIKEI RIVER VALLEY (ENCLOSURE 2)

Scale 1:71,500



Palaeomagnetic and Textural sampling localities are marked (see text for reference)



GEOLOGICAL REFERENCE

Group	Formation	Lithology	Stage
Lower Okiwa Groups	Undifferentiated	Marine, fossiliferous sands and silts with thin limestone horizons, Limestone usually recrystallised with sporadic greywacke pebbles	Nukumaruian
Paparangi Group (Fleming, 1953)	Mangaweka Mudstone (Ongley 1946)	Massive, blue-grey foraminifer mudstone. Locally sandy and calcareous, with sandstone, limestone and concretionary bands.	Mangapanian
Whenuakura Group (Fleming, 1953)	Utiku Sandstone (Ongley 1946)	Marine; medium to coarse grained concretionary sandstone. Contains a thick mudstone band in the centre of the formation. Concretions are ubiquitous and banded.	Waipipian
Tangahoe Group (This study)	Taihape Mudstone (Ongley 1946)	Marine; dark grey mudstone, concretionary and fossiliferous at places. Sandy in lower part. Taihape Sandstone crops out Towards top. Uppermost part is very muddy.	Opoitian
Matemateaonga Group (This study)	Waiouru Sandstone (Fleming, 1959)	Marine; fine to coarse grained, poorly bedded sands and bedded sandy muds. Localised conglomeratic facies and shallow water limestones in lower part.	Opoitian
Kaweka Greywacke Group		Alternating dark grey argillites and sandstones. Volcanic bands. Deformation complex, showing rodding and boudinage structures.	Triassic

Pliocene